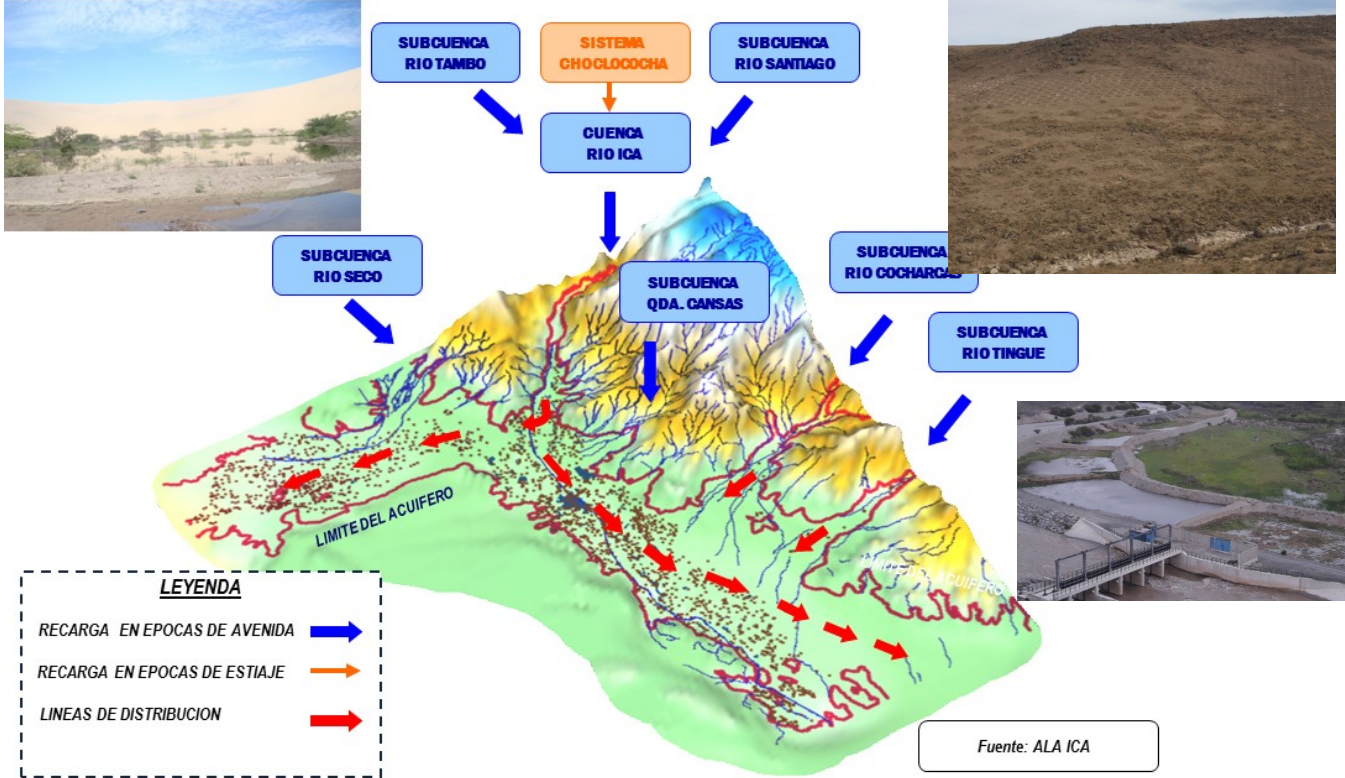
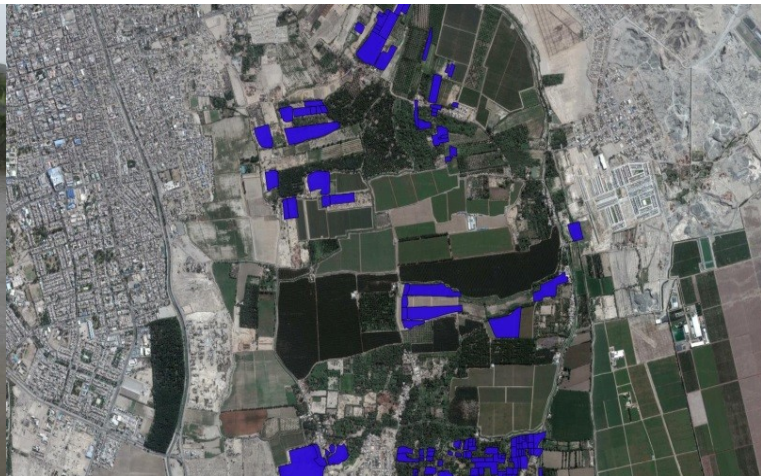


- By Enrique Fdez. Escalante and Roberto Navarro

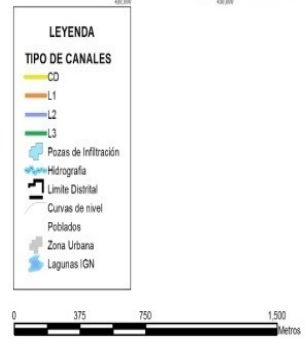
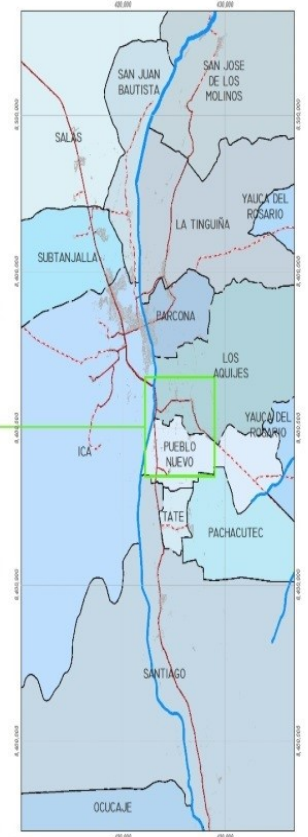
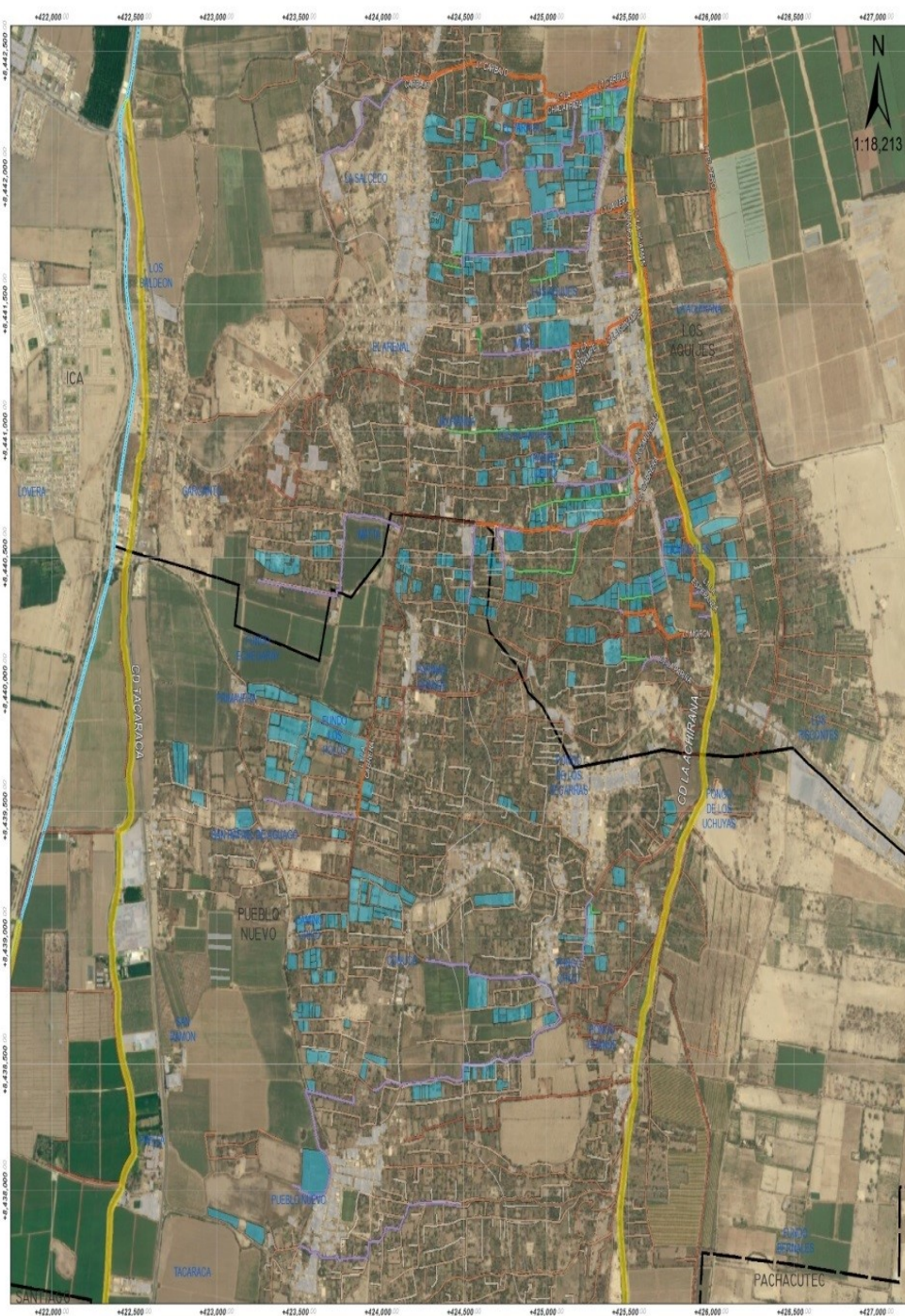




Storm Water from Ica river is retained in 640 decantation and infiltration ponds next to the river during rainy season







**PLANO DE UBICACIÓN DE POZAS DE INFILTRACIÓN:  
III- SUB SECTOR DE RIEGO LA ACHIRANA**

Plano: Ubicación del Área de Estudio

Sector:	Distrito:	Provincia:	Departamento:
-	Los Aquiles	Ica	Ica
Datum UTM:	Escala:	Fuente:	Fecha:
WGS-84	1:18,213	IGN, CDPORRI	Septiembre del 2015

U-01



muddy



OK! 😊

-The water has a decantation **pretreatment** and is directed to the infiltration ponds (*pozas*)

-Some ponds play a double role: **stagnation-MARing**

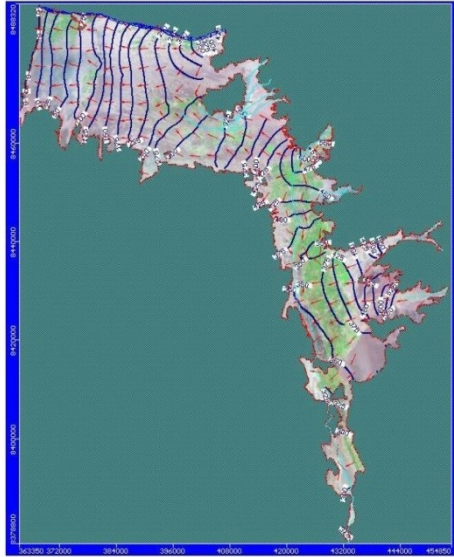
-**2017**, Feb-April: **17 MMC** of **water** has been **MARED** into the aquifer

-See drone film of the **MAR system**:

<https://www.youtube.com/watch?v=2TKSmj7rn-A>



# Research and implementation!



-More info coming soon in “*Manejo de la recarga de acuíferos: Un enfoque hacia Latinoamérica*” (IMTA, 2017), to be presented next October 3<sup>rd</sup>

**-MTOM IS MAINTAINING AND INVOLVING SOME FEW BUT IMPORTANT PARTNERS, IN SPECIAL FROM SPAIN, PERU, KOREA AND MEXICO, BUT THE ORIGINAL OBJECTIVES ARE STILL FAR AWAY!!**